



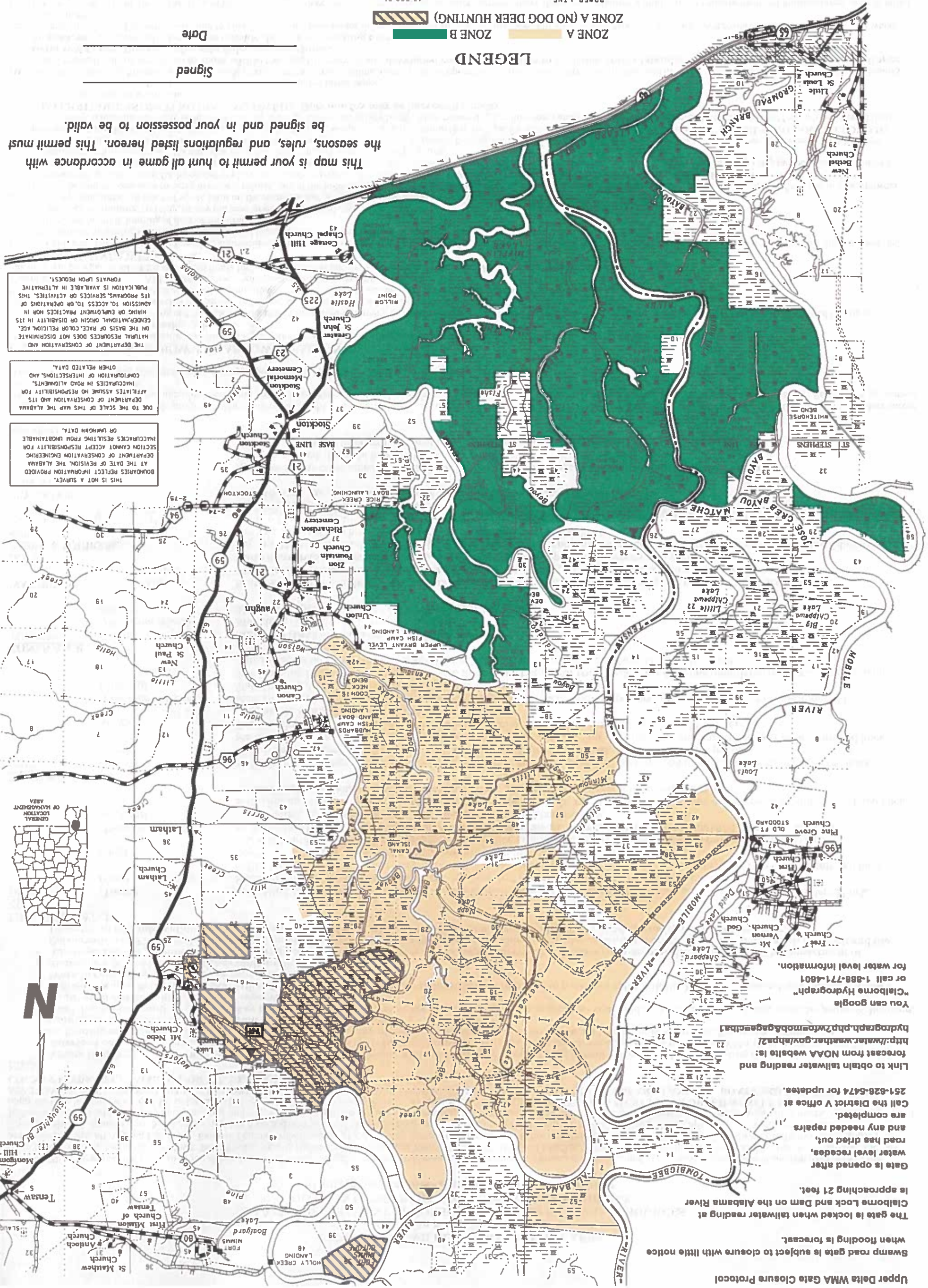
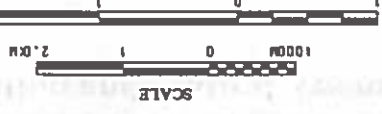
- POWER LINE
- PRIMITIVE ROAD / TRAIL
- UNIMPROVED ROAD
- GRADED AND DRAINED ROAD
- GRAVEL, STONE OR SOIL ROAD
- PAVED STATE ROUTE
- OTHER PAVED ROADS
- CATTLE GUARD
- MARSH AREA
- POWER SUB-STATION
- TOURIST OR TRAILER COURT
- CAMP OR LODGE
- SMALL PARK (SP-STAGE: CP-COUNTY)
- YACHT CLUB, MARINA OR FISH CAMP
- ROADSIDE PARK-PICNIC GROUND
- POST OFFICE
- WATER TANK OR STAND PIPE
- CHURCH
- CEMETERY
- CHURCH AND CEMETERY
- DOCK, PIER OR LANDING
- RMA CAMPSITES
- TARGET RANGE

ZONE A (NO DOG DEER HUNTING)
ZONE B

LEGEND

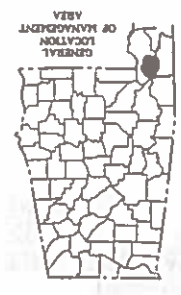
Signed _____
Date _____

UPPER DELTA WILDLIFE
MANAGEMENT AREA
ALABAMA DEPARTMENT OF CONSERVATION
AND NATURAL RESOURCES
DIVISION OF WILDLIFE
AND FRESHWATER FISHERIES
A WILDLIFE RESTORATION PROJECT



THIS IS NOT A SURVEY. BOUNDARIES REFLECT INFORMATION PROVIDED BY THE ALABAMA DEPARTMENT OF CONSERVATION AND NATURAL RESOURCES. THE ALABAMA DEPARTMENT OF CONSERVATION AND NATURAL RESOURCES ASSUMES NO RESPONSIBILITY FOR INACCURACIES IN ROAD ALIGNMENTS, CONFIGURATION OF INTERSECTIONS, AND OTHER RELATED DATA.

THE DEPARTMENT OF CONSERVATION AND NATURAL RESOURCES DOES NOT DISCRIMINATE ON THE BASIS OF RACE, COLOR, RELIGION, AGE, GENDER, NATIONAL ORIGIN OR DISABILITY IN ITS HIRING OR EMPLOYMENT PRACTICES NOR IN ITS DECISIONS TO ACCESS TO, OR OPERATIONS OF ITS PROGRAMS, SERVICES OR ACTIVITIES. THIS PUBLICATION IS AVAILABLE IN ALTERNATIVE FORMATS UPON REQUEST.



Upper Delta WMA Gate Closure Protocol

Swamp road gate is subject to closure with little notice when flooding is forecast.

The gate is locked when tailwater reading at Claiborne Lock and Dam on the Alabama River is approaching 21 feet.

Gate is opened after water level recedes, road has dried out, and any needed repairs are completed.

Call the District V office at 251-626-5474 for updates.

Link to obtain tailwater reading and forecast from NOAA website is: <http://water.weather.gov/ahps2/hydrograph.php?wfo=mb&gag=alab>

You can google "Caliborne Hydrograph" or call 1-888-771-4801 for water level information.

This map is your permit to hunt all game in accordance with the seasons, rules, and regulations listed hereon. This permit must be signed and in your possession to be valid.